		t 01606 861298 e all@technoprint.net w www.technoprint.net	
CLIENT	POST & COLUMN		
JOB No	D36561		
DATE	28 Sept 2006		
PROOF No	1		
Studio : L			

Lighting Columns

Designed to EN40



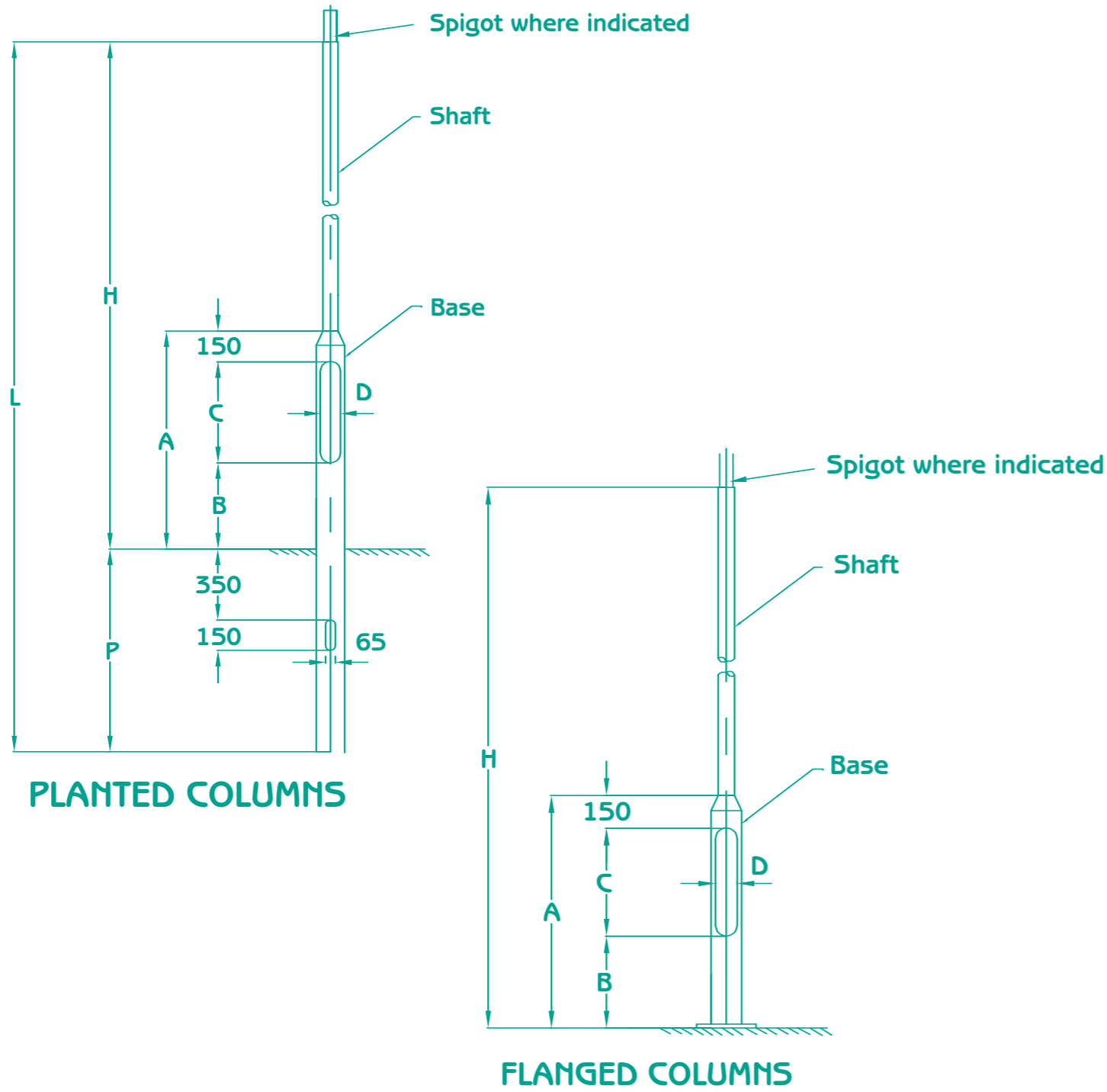
Approved to National Highways Sector Scheme 6
Specialist suppliers of Sign Posts and Lighting Columns



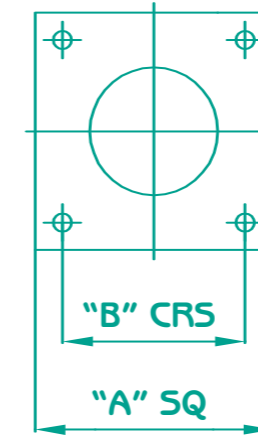
Tel: 01606 550502 Fax: 01606 550857
Email: info@postandcolumn.co.uk
Web: www.postandcolumn.co.uk
Road 4, Winsford Industrial Estate, Winsford, Cheshire CW7 3RS



**The Post & Column
Company Limited**
Formerly Cheshire Coatings



Bolt sizes and design loads available on request



Flange detail for lighting columns

Typical Flange Details		
Column Height m	'A' Square Dimension	'B' Bolt Sq. CRS
5 & 6 Metre	280	200
8, 10 & 12 Metre	400	300
15 Metre	500	400

Column Height	Column Drawing No	Planting Depth P	Overall Length L	Base Height A	Door to Ground B	Aperture Depth C	Aperture Width D	Base Diameter	Shaft Diameter	Mass KGs	Spigot Detail
5 Metre	PC 0501	800	5800	1150	500	500	100	140	76	48	N/A
5 Metre	PC 0502	800	5800	1150	500	500	100	168	89	56	ø76x200
6 Metre	PC 0601	1000	7000	1150	500	500	100	140	76	56	N/A
6 Metre	PC 0602	1000	7000	1150	500	500	100	140	89	60	ø76x200
6 Metre	PC 0603	1000	7000	1150	500	500	100	168	89	66	ø76x200
8 Metre	PC 0801	1200	9200	1550	800	600	115	168	89	85	ø76x200
8 Metre	PC 0802	1200	9200	1550	800	600	115	168	114	98	ø101x250
8 Metre	PC 0803	1200	9200	1550	800	600	115	194	114	122	ø101x250
10 Metre	PC 1001	1500	11500	1750	1000	600	115	168	114	142	ø101x250
10 Metre	PC 1002	1500	11500	1750	1000	600	115	168	140	164	ø127x300
10 Metre	PC 1003	1500	11500	1750	1000	600	115	194	140	172	ø127x300
10 Metre	PC 1004	1500	11500	1750	1000	600	115	194	140	186	ø127x300
12 Metre	PC 1201	1700	13700	1750	1000	600	115	194	140	202	ø127x300
12 Metre	PC 1202	1700	13700	1750	1000	600	115	219	168	240	ø152x300
12 Metre	PC 1203	1700	13700	1750	1000	600	115	219	193	283	ø177x300
15 Metre	PC 1501	2000	17000	1750	1000	600	115	219	194	347	ø177x300
15 Metre	PC 1502	2000	17000	1750	1000	600	115	219	194	372	ø177x300
15 Metre	PC 1503	2000	17000	1750	1000	600	115	219	194	465	ø177x300
15 Metre	PC 1504	2000	17000	1750	1000	600	115	219	194	542	ø177x300

Lighting columns fully meet the requirements of EN40
 Minimum grade of steel BSEN 10219 S275
 Columns hot dip galvanised to BSEN 1461
 Column finishes available to all HA specifications

